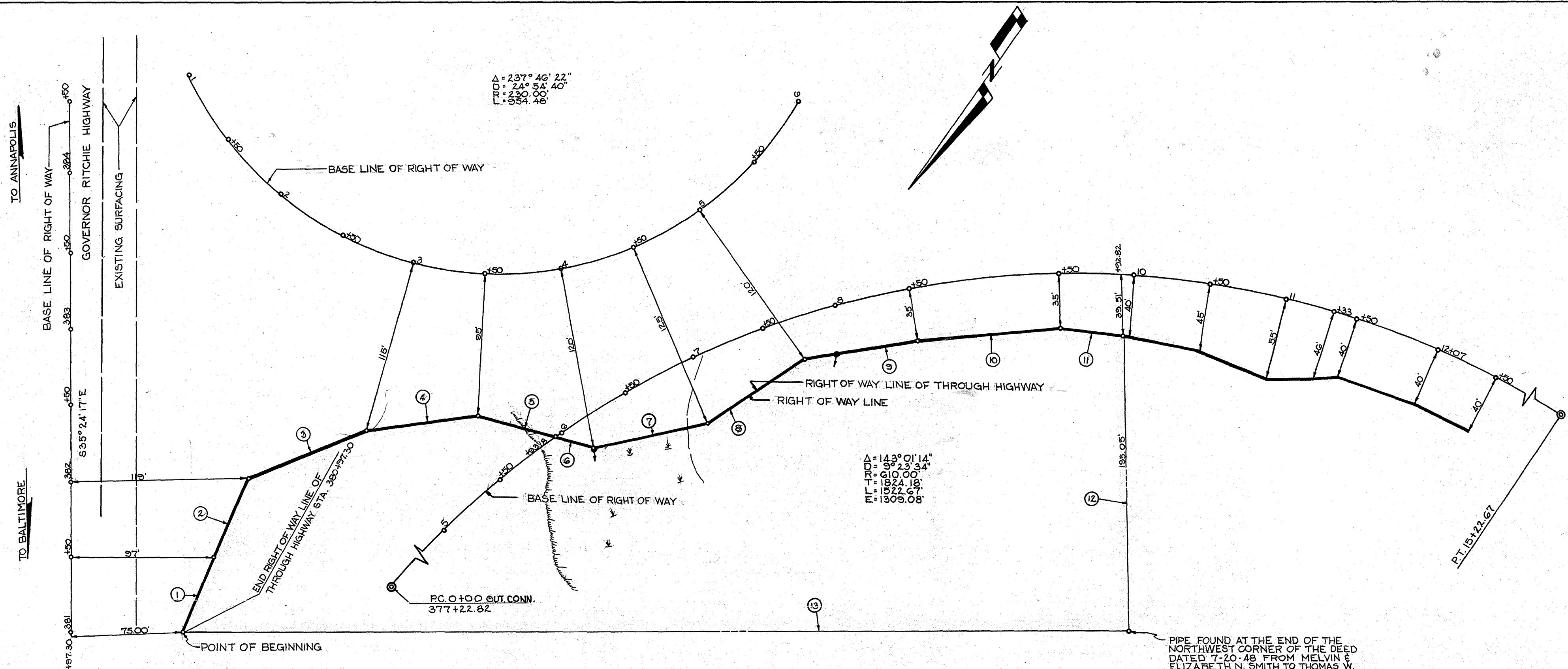


METES & BOUNDS	
1.	S12°44'41"E 57.11'
2.	S11°39'17"E 54.63'
3.	S31°27'59"W 83.91'
4.	S48°20'04"W 75.35'
5.	S69°55'27"W 54.24'
6.	S69°55'27"W 23.09'
7.	S42°26'22"W 76.64'
8.	S22°32'51"W 76.64'
9.	S46°34'50"W 80.81'
10.	S49°07'45"W 94.16'
11.	S62°15'08"W 41.21'
12.	N36°04'08"W 194.95'
13.	N54°35'29"E 627.38'



FRED R. MENKE
59569

SECY # 56044
6-12-74
COND.

EXTRA LAND AREA 2.151 ACRES± SHOWN THUS □

LEGEND	
	REVERTIBLE EASEMENT FOR SUPPORTING SLOPES.
	REVERTIBLE EASEMENT OR RIGHT FOR SPECIAL PURPOSE AS INDICATED BY NOTATION ON THIS PLAT.
	PERPETUAL EASEMENT FOR SPECIAL PURPOSE AS INDICATED BY NOTATION ON THIS PLAT.
	PERPETUAL EASEMENT FOR DRAINAGE FACILITY AS INDICATED BY NOTATION ON THIS PLAT. (ARROW INDICATES GENERAL DRAINAGE FLOW PATTERN)
	PERPETUAL EASEMENT TO DISCHARGE FLOW OF WATER FROM OR INTO EXISTING WATERWAY OR NATURAL DRAINAGE COURSE.
	PERPETUAL EASEMENT TO DISCHARGE FLOW OF WATER UPON EXISTING GROUND.
	APPROXIMATE GENERAL DRAINAGE FLOW PATTERN (NOT TO SCALE-FOR EXPLANATORY PURPOSE ONLY)

THIS IS AN EXPRESSWAY, AND NO ACCESS EITHER VEHICULAR, PEDESTRIAN AND/OR ANIMAL WILL BE PERMITTED ACROSS THE LINES DESIGNATED "RIGHT OF WAY LINE OF THROUGH HIGHWAY" EXCEPT BY MEANS OF SUCH PUBLIC ROAD CONNECTIONS AS THE COMMISSION MAY CONSTRUCT OR PERMIT TO BE CONSTRUCTED.

SENT TO RECORD OFFICE AUG. 26, 1974

FINALIZED BY CHAIRMAN AND DIRECTOR _____ 19__

BOOKS	REVISIONS	PART OF PLATS
21-108		35906 38913

LOCATED IN ANNE ARUNDEL COUNTY

PREPARED BY BUREAU OF HIGHWAY DESIGN
Salvatore J. DiStasio
ENGINEER - HIGHWAY DESIGN

CONSTRUCTION PROJECT: RELOCATED MD. RTE. 177 BETWEEN GOVERNOR RITCHIE HIGHWAY AND OLD MILL ROAD

CONSTRUCTION PROJECT NO.: AA-507-30-541

STATE ROADS COMMISSION OF MARYLAND

RIGHT OF WAY PROJECT: NEW MD. RTE. 177 - MD. RTE. 2 EAST TO SHARONVILLE

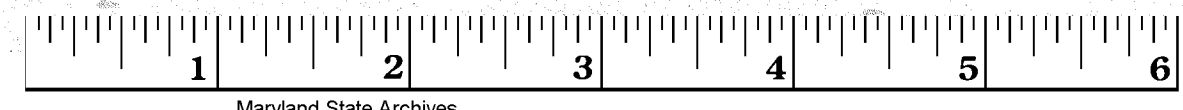
RIGHT OF WAY PROJECT NO. AA-507-23-571

FEDERAL AID PROJECT NO. _____

ISSUED January 22, 1970 SCALE 1"=50'

Louis A. Yost Jr.
CHIEF, RIGHT OF WAY DIVISION

PLAT No. 40258



4182 3625-40258