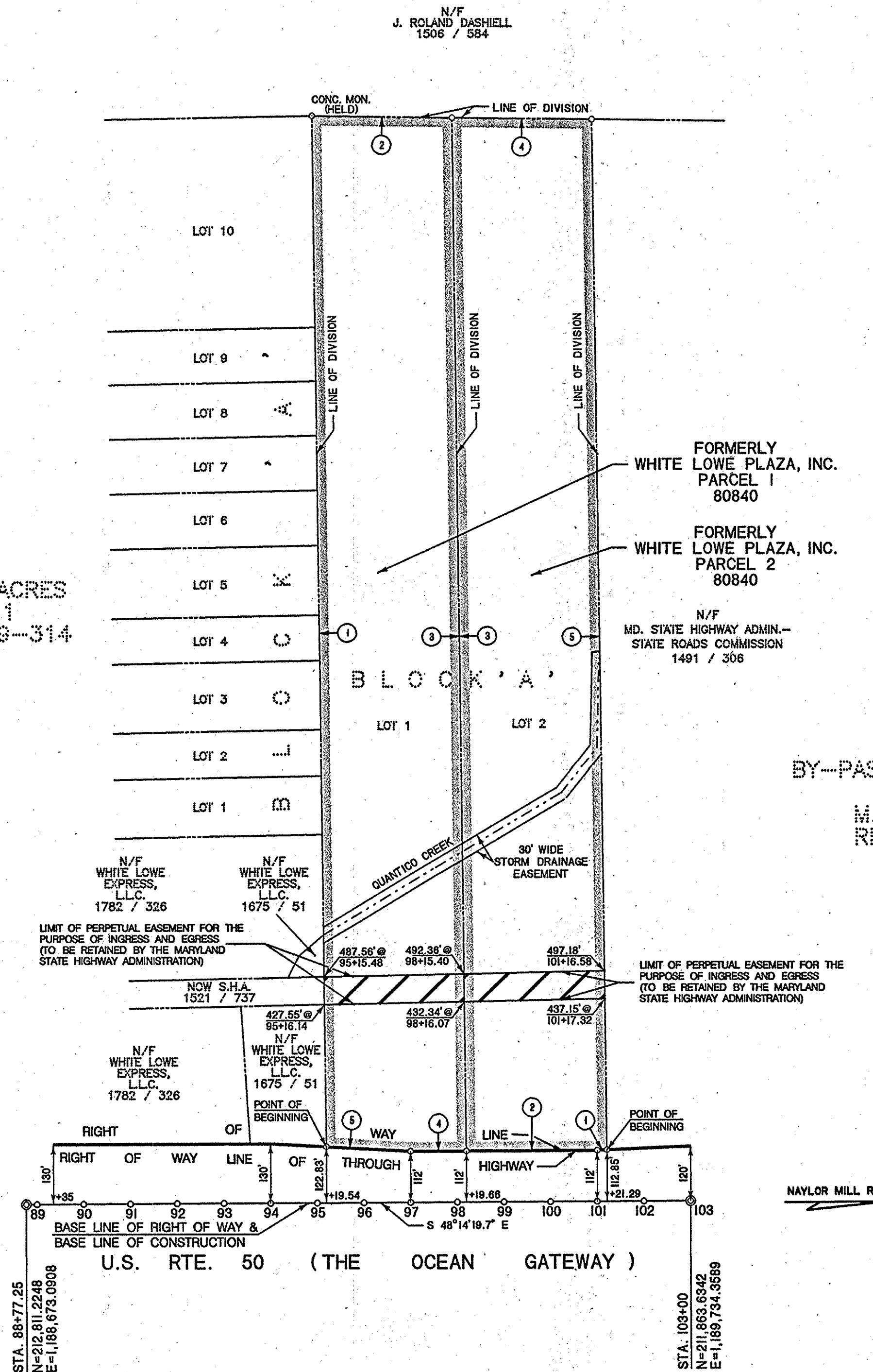


FORMERLY WHIE LOWE PLAZA, INC. 80840-PARCEL 1		
REC'D LIBER	FOLIO	
1	N 41°07'18" E	2210.51'
2	S 47°18'02" E	300.00'
3	S 41°07'09" W	2216.42'
4	N 48°14'20" W	119.66'
5	N 44°48'19" W	180.78'

AREA CONVEYED OR TO BE CONVEYED BY THE STATE HIGHWAY ADMINISTRATION — STATE ROADS COMMISSION OF MARYLAND.  
664,534 SQ.FT. OR 15.256 ACRES ± SHOWN THUS:

WHITE LOWE ACRES  
SECTION 1  
M.S.B. 6 \ 78-314



FORMERLY WHIE LOWE PLAZA, INC. 80840-PARCEL 2		
REC'D LIBER	FOLIO	
1	N 50°31'46" W	21.31'
2	N 48°14'20" W	280.34'
3	N 41°07'09" E	2216.42'
4	S 47°18'02" E	299.40'
5	S 41°03'31" W	2210.70'

AREA CONVEYED OR TO BE CONVEYED BY THE STATE HIGHWAY ADMINISTRATION — STATE ROADS COMMISSION OF MARYLAND.  
665,183 SQ.FT. OR 15.271 ACRES ± SHOWN THUS:

BY-PASS COMMERCIAL CENTER  
SECTION ONE  
M.S.B. 9 / 59-233  
REC'D OCT. 5 1989

THIS DOCUMENT HAS BEEN PREPARED FROM DATED STATE HIGHWAY ADMINISTRATION PLATS AND FIELD SURVEY NOTES BUT IS NOT THE RESULT OF A CURRENT FIELD SURVEY. THIS PLAT WAS DEVELOPED TO THE BEST OF MY PROFESSIONAL KNOWLEDGE AND JUDGEMENT.  
GEORGE A. HADEL, JR.  
PROPERTY LINE SURVEYOR      MD. REG. NO 549

*George A. Hadel, Jr.* DATE Oct 1, 2003



- LEGEND
- REVERSIBLE EASEMENT FOR SUPPORTING SLOPES AND DRAINAGE DITCHES AS INDICATED BY NOTATION ON PLAT.
  - REVERSIBLE EASEMENT OR RIGHT FOR SPECIAL PURPOSE AS INDICATED BY NOTATION ON PLAT.
  - PERPETUAL EASEMENT FOR SPECIAL PURPOSE AS INDICATED BY NOTATION ON THIS PLAT.
  - PERPETUAL EASEMENT FOR DRAINAGE FACILITY AS INDICATED BY NOTATION ON THIS PLAT. (ARROW INDICATES GENERAL DRAINAGE PATTERN)
  - PERPETUAL EASEMENT TO DISCHARGE FLOW OF WATER FROM OR INTO EXISTING WATERWAY OR NATURAL DRAINAGE COURSE.
  - PERPETUAL EASEMENT TO DISCHARGE FLOW OF WATER UPON EXISTING GROUND.
  - APPROXIMATE GENERAL DRAINAGE FLOW PATTERN (NOT TO SCALE-FOR EXPLANATORY PURPOSE ONLY)

THIS IS AN EXPRESSWAY AND NO ACCESS EITHER VEHICULAR, PEDESTRIAN, AND/OR ANIMAL WILL BE PERMITTED ACROSS THE LINES DESIGNATED "RIGHT OF WAY LINE OF THROUGH HIGHWAY" EXCEPT BY MEANS OF SUCH PUBLIC ROAD CONNECTIONS AS ARE AUTHORIZED BY LAW.

SENT TO RECORD OFFICE \_\_\_\_\_ 20  
APPROVED BY CHAIRMAN \_\_\_\_\_ 20

BOOKS	REVISIONS	PART OF PLATS
23105 23498 (M&B) 23957 (TRAV) 24254		8271 8272 (REV. 3/7/50) 8274 (REV. 2/4/94) 8274 (REV. 10/2/95) 54333 54529

LOCATED IN \_\_\_\_\_ WICOMICO \_\_\_\_\_ COUNTY

PREPARED BY PLATS AND SURVEYS DIVISION  
GEORGE A. HADEL, JR.  
PLAT ENGINEER

CONSTRUCTION PROJECT: SALISBURY BYPASS  
RELOCATED U.S. ROUTE 50

CONSTRUCTION PROJECT NO: WI 641-501-170

**STATE OF MARYLAND  
DEPARTMENT OF TRANSPORTATION  
STATE HIGHWAY ADMINISTRATION  
STATE ROADS COMMISSION**

**RIGHT OF WAY PROJECT :** SALISBURY BYPASS  
RELOCATED U.S. ROUTE 50  
WI 641-301-170

**RIGHT OF WAY PROJECT NO. FEDERAL AID PROJECT NO.** MA-STP-316-1(24)N

**SCALE** 1"=200'

**PLAT No. 56285**

ISSUED Oct 1 2003  
*George A. Hadel, Jr.*  
CHIEF, PLATS AND SURVEYS DIVISION