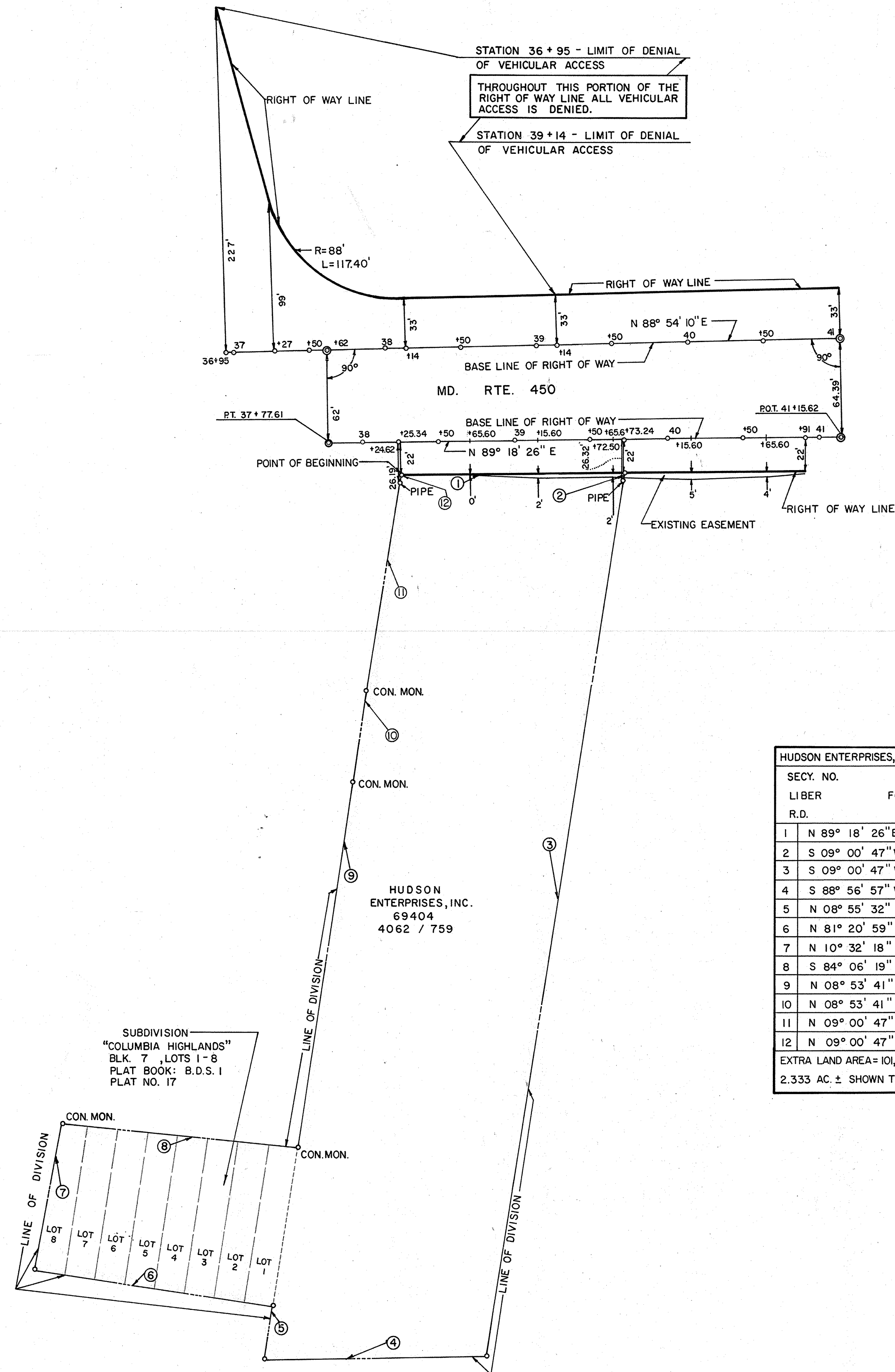


TO BLADENSBURG

TO LANDOVER HILLS



HUDSON ENTERPRISES, INC. - 69404		
SECY. NO.	LIBER	FOLIO
R.D.		
1	N 89° 18' 26" E	147.91'
2	S 09° 00' 47" W	04.38'
3	S 09° 00' 47" W	583.95'
4	S 88° 56' 57" W	147.20'
5	N 08° 55' 32" E	36.39'
6	N 81° 20' 59" W	158.20'
7	N 10° 32' 18" E	98.15'
8	S 84° 06' 19" E	155.64'
9	N 08° 53' 41" E	243.35'
10	N 08° 53' 41" E	60.00'
11	N 09° 00' 47" E	139.55'
12	N 09° 00' 47" E	04.25'
EXTRA LAND AREA = 101,604 SQ. FT. OR 2.333 AC. ± SHOWN THUS: <input type="checkbox"/>		

Acquired by Condemnation
Sec'y # 61537
Trial Date 5-4-82

LEGEND

	REVERTIBLE EASEMENT FOR SUPPORTING SLOPES.
	REVERTIBLE EASEMENT OR RIGHT FOR SPECIAL PURPOSE AS INDICATED BY NOTATION ON THIS PLAT.
	PERPETUAL EASEMENT FOR SPECIAL PURPOSE AS INDICATED BY NOTATION ON THIS PLAT.
	PERPETUAL EASEMENT FOR DRAINAGE FACILITY AS INDICATED BY NOTATION ON THIS PLAT. (ARROW INDICATES GENERAL DRAINAGE FLOW PATTERN)
	PERPETUAL EASEMENT TO DISCHARGE FLOW OF WATER FROM OR INTO EXISTING WATERWAY OR NATURAL DRAINAGE COURSE.
	PERPETUAL EASEMENT TO DISCHARGE FLOW OF WATER UPON EXISTING GROUND.
	APPROXIMATE GENERAL DRAINAGE FLOW PATTERN (NOT TO SCALE-FOR EXPLANATORY PURPOSE ONLY)

SENT TO RECORD OFFICE <u>AUGUST 26</u> , 19 <u>82</u>
APPROVED BY CHAIRMAN _____ 19

BOOKS	REVISIONS	PART OF PLAT
15687		27158 (rev. 8-22-62)

LOCATED IN <u>PRINCE GEORGES</u> COUNTY
PREPARED BY <u>BUREAU OF HIGHWAY DESIGN</u>
ENGR. - <u>Highway Design</u>
CONSTRUCTION PROJECT: <u>B/W PARKWAY - D.C. LINE TO ANNE ARUNDEL COUNTY LINE</u>
CONSTRUCTION PROJECT NO.: <u>P 286 - 370</u>

STATE OF MARYLAND
DEPARTMENT OF TRANSPORTATION
STATE HIGHWAY ADMINISTRATION
STATE ROADS COMMISSION

RIGHT OF WAY PROJECT: B/W PARKWAY - D.C. LINE TO ANNE ARUNDEL COUNTY LINE

RIGHT OF WAY PROJECT NO. P 286 - 001 - 370

FEDERAL AID PROJECT NO. F 142 - 1 (33)

ISSUED August 6, 1979

CHIEF, BUREAU OF HIGHWAY DESIGN

SCALE 1" = 50'

PLAT No. 46976